



GAT MONTHLY MEMBERSHIP PROGRESS REPORT

Results as of: 2/28/2022

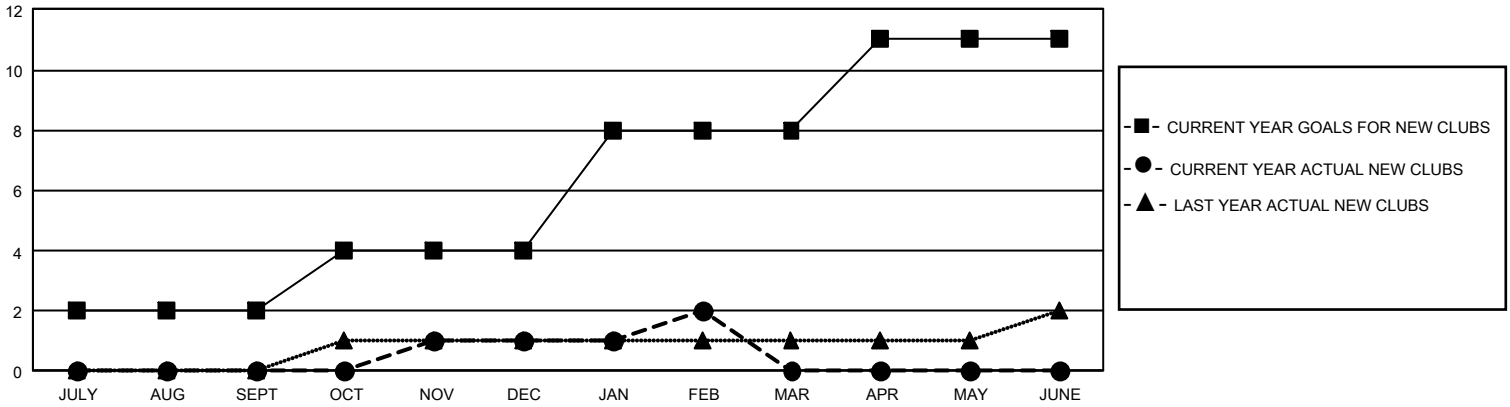
GMT Constitutional Area 5 - J, Group J

REPORT DOES NOT INCLUDE CLUBS IN UNDISTRICTED AREAS.

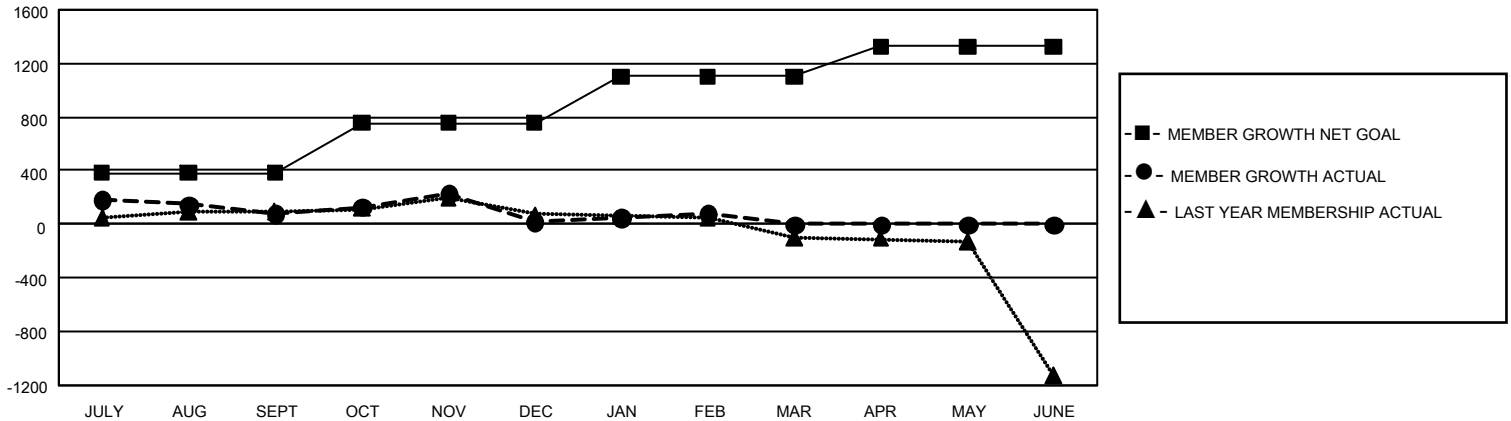
Clubs			
RESULTS FOR 2021-2022			
QUARTER	NEW CLUB GOAL	NEW CLUBS	DROPPED CLUBS
JULY/AUG/SEPT	6	0	0
OCT/NOV/DEC	6	1	2
JAN/FEB/MAR	12	1	2
APR/MAY/JUNE	9	0	0

Members			
RESULTS FOR 2021-2022			
QUARTER	MEMBER GROWTH NET GOAL	MEMBER GROWTH ACTUAL	DROPPED MEMBERS ACTUAL (including transfers)
JULY/AUG/SEPT	381	583	463
OCT/NOV/DEC	375	460	508
JAN/FEB/MAR	345	297	221
APR/MAY/JUNE	225	0	0

GOALS AND ACTUAL NEW CLUBS CUMULATIVE



GOALS AND ACTUAL MEMBERS CUMULATIVE



DROPPED CLUBS: 4	466 CLUBS OF 771 ADDED 1 OR MORE NEW MEMBERS	<u>GENDER DISTRIBUTION</u>	
<u>DROPPED MEMBERS</u>		MALE	21,905 (78.83%)
DECEASED	157	FEMALE	5,882 (21.17%)
CLUB CANCELLED	18	NON BINARY	0 (0.00%)
OTHER	1,017	PREFER NOT TO ANSWER	1 (0.00%)
TOTAL	1,192	TOTAL FAMILY UNIT MEMBERS	7,509
	CLICK HERE FOR CUMULATIVE MEMBERSHIP DATA	FAMILY MEMBERS PAYING HALF DUES	4,113